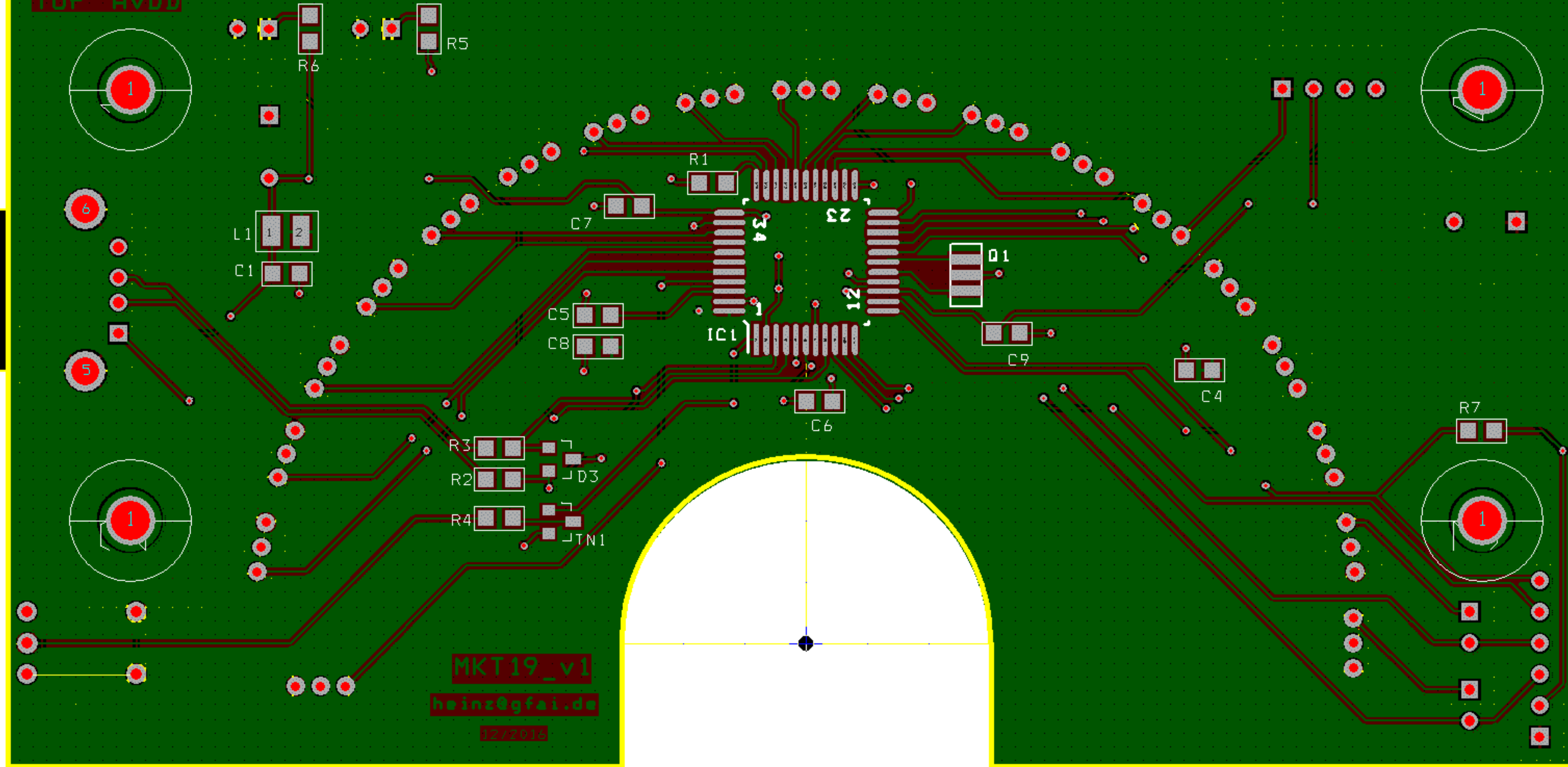


TOP AVDD



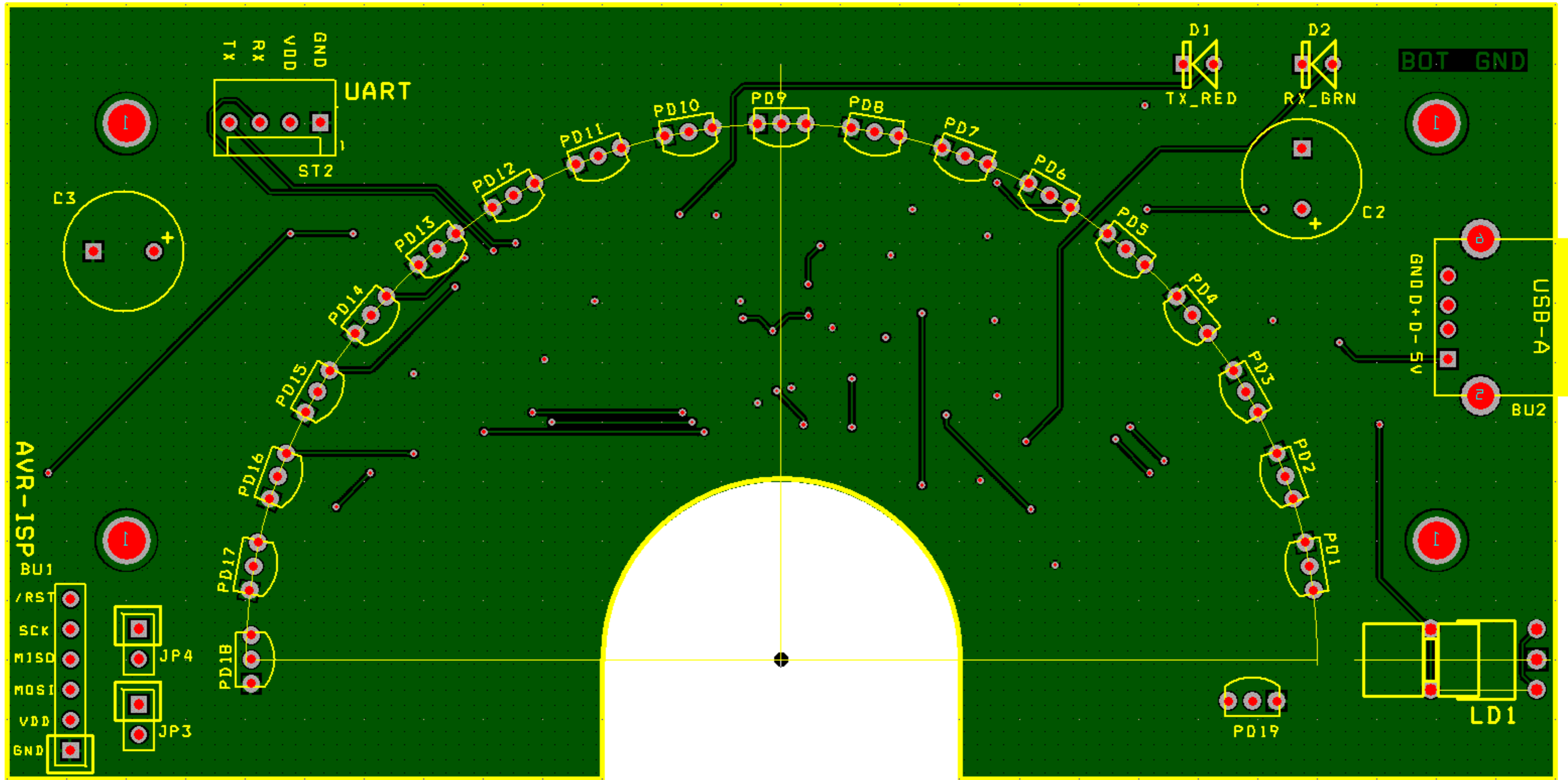
MKT19\_v1

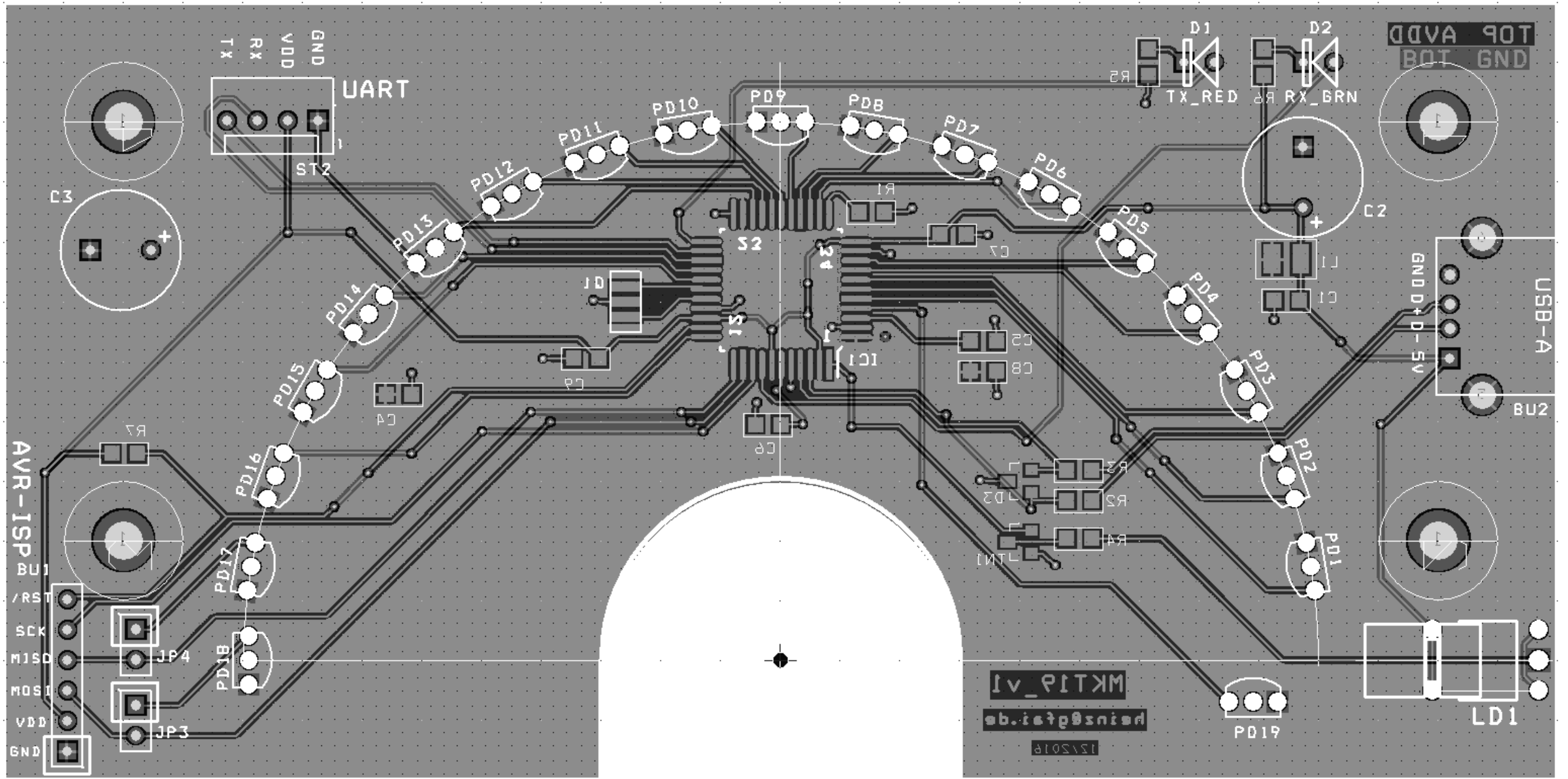
heinz@gfai.de

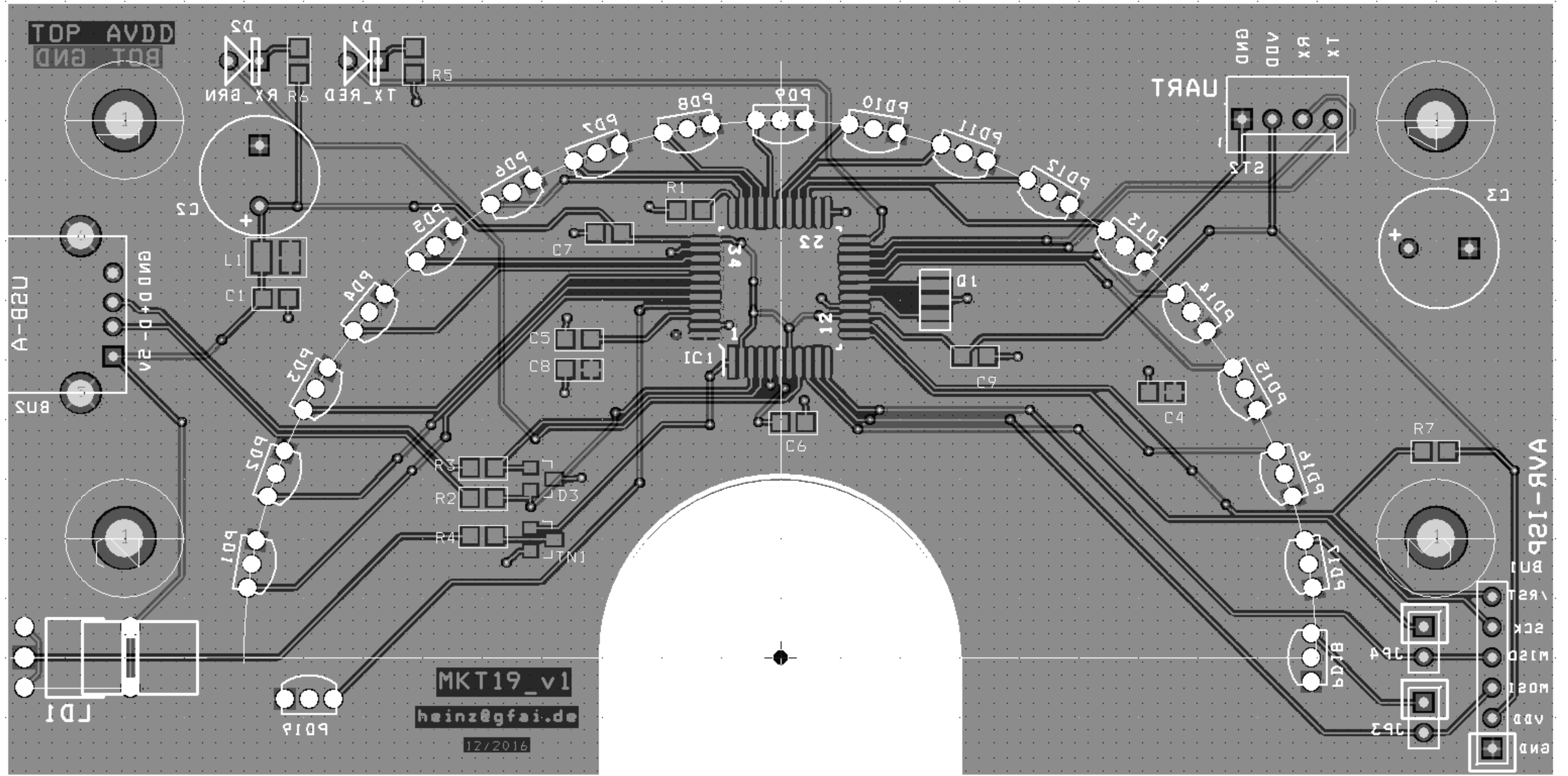
12/2019



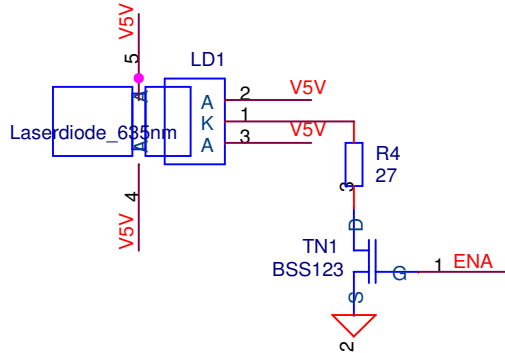
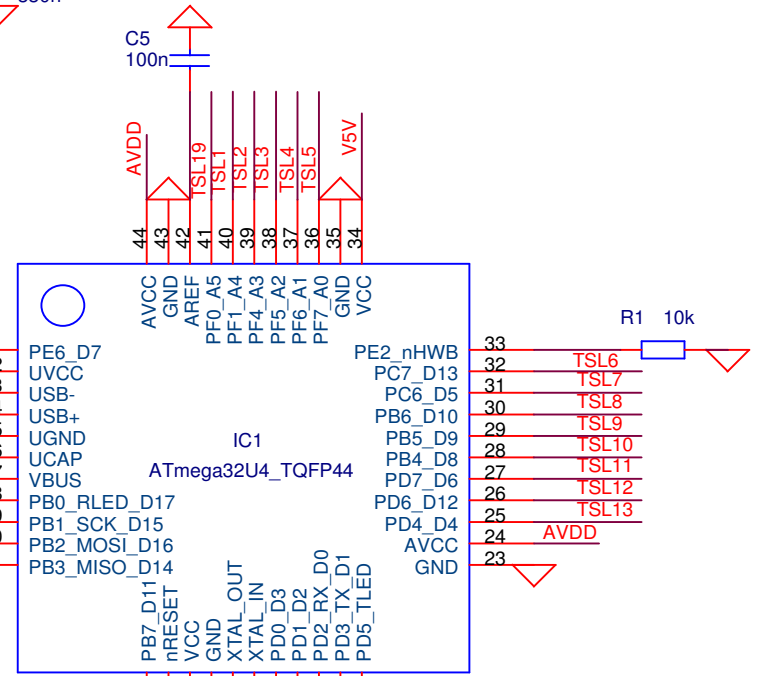
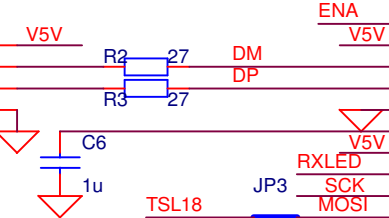
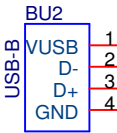
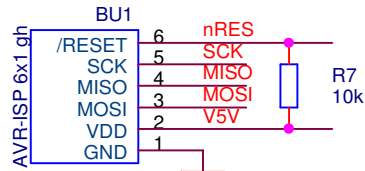
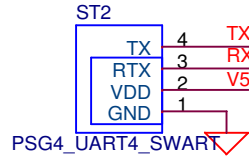
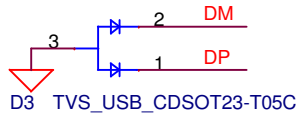
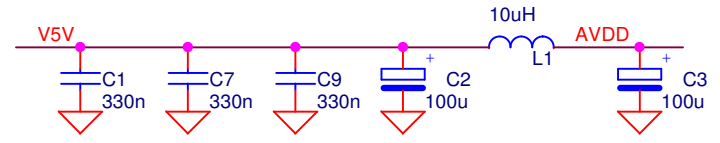
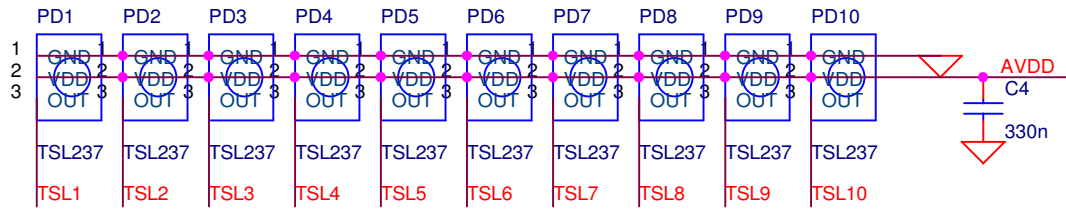
D2 verkehrt gepolt!



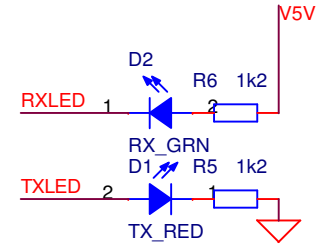




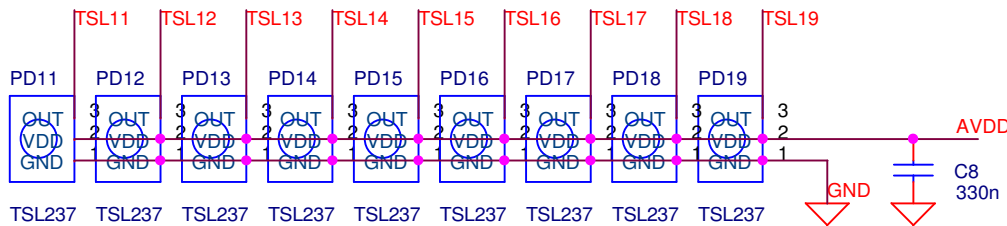
alle durchsteckbaren BE werden von unten eingebaut!



Mit AVR-ISP wird nur der USB-Bootlader gebrannt, danach werden JP3 und JP4 für immer geschlossen!



RGB-LED geht nicht wegen Anode!



Title		
Mehrkanal-Turbimeter MKT19		
Size	Document Number	Rev
A	heinz@gfai.de	1
Date:	Friday, March 10, 2017	Sheet 1 of 1

Mehrkanal-Turbimeter MKT1  
Revised: Thursday, February 02, 2017  
heinz@gfai.de                      Revision: 1

Bill Of Materials  
February 2,2017                      16:11:57 Page1

Item	Quantity	Reference	Part
1	1	BU1	AVR-ISP 6x1 gh
2	1	BU2	USB-B
3	5	C1,C4,C7,C8,C9	330n
4	2	C3,C2	100u
5	1	C5	100n
6	1	C6	1u
7	1	D1	TX_RED
8	1	D2	RX_GRN
9	1	D3	TVS_USB_CDSOT23-T05C
10	1	IC1	ATmega32U4_TQFP44
11	2	JP3,JP4	JP
12	1	LD1	Laserdiode_635nm
13	1	L1	10uH
14	19	PD1,PD2,PD3,PD4,PD5,PD6, PD7,PD8,PD9,PD10,PD11, PD12,PD13,PD14,PD15,PD16, PD17,PD18,PD19	TSL237
15	1	Q1	CSTCE16M00
16	2	R7,R1	10k
17	3	R2,R3,R4	27
18	2	R6,R5	1k2
19	1	ST2	PSG4_UART4_SWART
20	1	TN1	BSS123